

# Updates to Testing Regimes

## Updates to Testing Regimes

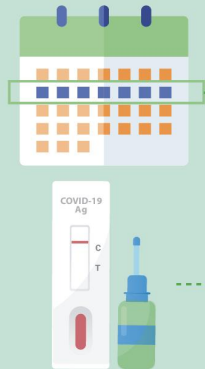


- **From 13 September**, the frequency of mandatory Fast and Easy Test (FET) Rostered Routine Testing (RRT) regime will increase from once every fortnight to once a week. The mandatory FET RRT is in place for higher-risk settings such as F&B, gym and fitness studios.

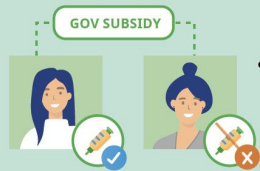


- Mandatory FET RRT will be expanded to more settings with frequent community interactions, including:

- Retail mall workers
- Supermarket staff
- Last-mile delivery personnel (including parcel and food delivery personnel)
- Public and private transport workers (taxi drivers, private hire car drivers and all public transport frontline staff)

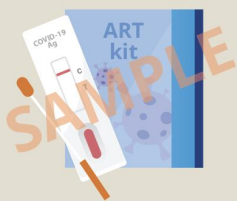


- All workers who work in these settings must undergo a seven-day FET RRT regime. These tests will continue to be administered primarily through Employer Supervised Self-Swab.



- The Government will subsidise the costs of all tests under this enhanced testing regime, for both vaccinated and unvaccinated individuals, till end-2021.

## Time-Limited Distribution of ART kits



- The Government will undertake a time-limited distribution of ART kits to companies.



- Companies will be offered 8 kits per employee, for weekly testing over a two-month period.



- Companies will need to put in place a process to ensure that the tests are done properly, and report their employees' weekly test results to respective government agencies.



- More details will be released at a later date.

### Queries?

Contact **6898 1800**

The Enterprise Infoline operates from:  
8.30am – 5.30pm (Mon – Fri)  
\*Closed on public holidays



**"COVID-19 Chat for Biz" chatbot**  
Get real-time responses to your queries now!

**MTI** MINISTRY OF TRADE  
AND INDUSTRY  
SINGAPORE

Information accurate as at September 2021