



**ACCELERATING
TRANSFORMATION.
GROWING TOGETHER**
INTERNATIONAL BUILT ENVIRONMENT WEEK
5 - 9 SEPTEMBER 2022
SABRE EXPO & CONVENTION CENTER

REGISTER NOW

To enjoy Early Bird Discount

Ends on 5 August 2022



Last chance to enjoy Early Bird Discount before it ends on 5 August 2022!

Sign up now!

Gain accreditation points from over **10** professional bodies

Hear from over **65** distinguished industry luminaries and thought leaders at our conference

Connect and network with over **10,000** BE professionals over the week

The International Built Environment Week (IBEW) 2022 is back as an in-person event from 5-9 September 2022! Themed "Accelerating Transformation, Growing Together", IBEW is a movement to gather industry professionals from the Built Environment (BE) sector to take action in stepping up transformation of our sector together. Other than our physical conference and trade show, come and join us in our learning journeys to local exemplary projects and network in person.

Join us at the IBEW Conference to discuss trending topics and current issues related to **Sustainability & Green Economy, Technology & Innovation, Leadership & Future Growth!**

Book your conference passes today!

EARLY BIRD DISCOUNT UP TO

40%



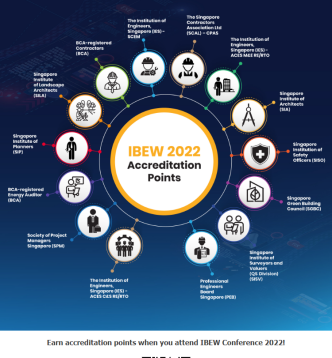
TILL 5 AUGUST 2022

IN-PERSON CONFERENCE PASS CATEGORY	EARLY BIRD RATE (Before GST)	NORMAL RATE (Before GST)
3-Day Conference Pass	\$690	\$1,100
1-Day Conference Pass	\$450	\$600

A group discount of 10% is available for the 3-day in-person conference passes when 6 or more register together.



[GET YOUR EARLY BIRD TICKET](#)



Earn accreditation points when you attend IBEW Conference 2022!



[FIND OUT MORE ON ACCREDITATION POINTS](#)

SITE TOURS (5 SEPTEMBER 2022) – OPTIONAL ADD-ONS

Join our Learning Journeys to these exemplary local projects with notable efforts in DfMA and environmental sustainability!

Want to learn more about Singapore's first net zero building by a bank?



DBS NEWTON GREEN
(Tickets running low!)

Want to learn more about PPVC?

If you would like to view ongoing PPVC installation, join us at **Irwell Hill Residences!**



Irwell Hill Residences

If you would like to find out more about the world's tallest PPVC project, sign up for our learning journey to **Avenue South Residence!**



Avenue South Residence

**Programme overview is subject to change.*



[FOR MORE SITE TOURS](#)

FOLLOW US ON



The IBEW is organised by BCA International, a wholly owned subsidiary of BCA, in partnership with RX Singapore.

Building and Construction Authority



An Initiative Under



Co-located Exhibition



Connect with our Sponsors to find out how you can accelerate your transformation.

Diamond Sponsor

HITACHI

Inspire the Next

Ruby Sponsor



Perfecting the Air

CEOs in Conversation Sponsor



Changes for the Better

Platinum Session Sponsors



Session Sponsors



Check out our full list of Sponsors

