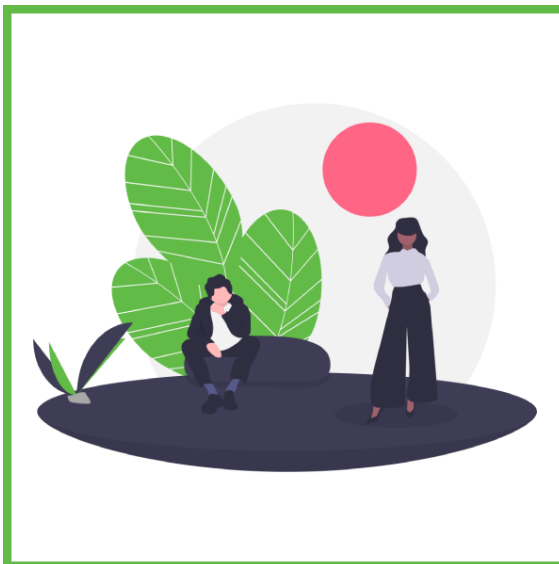




Accelerate your Learning and Professional Development

Access relevant industry knowledge with these upcoming SGBC's industry courses.



Assessing the Carbon Footprint of your Organisation

SGBC-GMAP CPD Points: 6

Fees (incl. GST): \$302 - \$540

Duration: 1 Day

Virtual or in-person formats

[— Find out more](#)

Learn how to assess the environmental impact of your organisation and gain the foundational skills needed to compute and prepare carbon emissions data for sustainability reporting.

[Register for the Feb 2023 Intake \(Virtual Learning\)](#)

Assessing the Carbon Footprint of your Building Product

SGBC-GMAP CPD Points: 6

Fees (incl. GST): \$540 - \$1,296

Duration: 3 Half-days

Virtual or in-person formats

[— Find out more](#)



Learn more about the environmental impact of building products and gain the skills needed to produce a simplified assessment report to communicate a product's carbon footprint.

[Register for the Feb 2023 Intake \(Virtual Learning\)](#)



Life Cycle Assessment Courses - May 2023 Intake

SGBC-GMAP CPD Points: 3

Fees (incl. GST): \$237 - \$756

Duration: Half-day

Virtual learning format

[— Find out more](#)

Life cycle assessment (LCA) is a standardised, science-based tool to calculate the environmental impact of a product, service, or process. It can both measure a building's lifetime impacts and, at the same time, quantify the impact of a single material in the building.

Underpinned by international standards, LCA plays a critical role in green building design and in documenting and communicating a building's lifetime carbon impacts.

Acquire the tools and skills to meaningfully assess the environmental impact of buildings for the new normal through SGBC's course series dedicated to understanding building life cycle assessment.

[Register for the May 2023 Intake \(Virtual Learning\)](#)

[Products](#) | [Services](#) | [Corporate Members](#) | [Green Mark APs](#) | [Digital Academy](#)

Copyright © 2023 Singapore Green Building Council, All rights reserved.

You are receiving this email as you subscribed to updates via our website or attended our events and opted for updates.

Office Address:

Singapore Green Building Council
Block H #02-04, BCA Braddell Campus
200 Braddell Road
Singapore 579700
Singapore

[Add us to your address book](#)

Want to change how you receive these emails?

You can [update your preferences](#) or [unsubscribe from this list](#).

