

Enhancements to Jobs Support Scheme (JSS)

Helping local employees in affected sectors stay employed through Phase 2 (Heightened Alert) and Phase 3 (Heightened Alert) measures



Sectors with Enhanced JSS Support

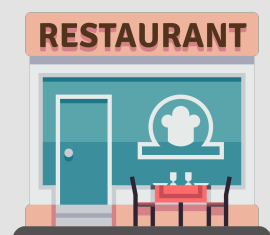
50%

[New] Extended till 20 Jun

10%

[New] 21 to 30 Jun

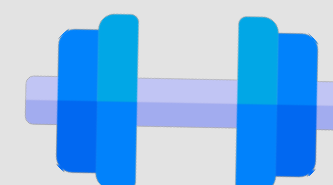
Licensed Food Shops
& Food Stalls



Performing Arts
& Arts Education



Gyms &
Sports Facilities*

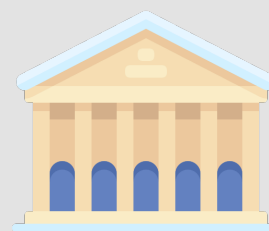


*JSS support will replace the operating grant for gyms & fitness studios under the Sports Resilience Package from 16 May to 30 Jun '21

Qualifying
Retail Outlets**



Museums, Art Galleries,
& Historical Sites



Affected Personal
Care Services



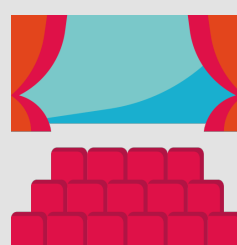
30%

[New] Extended till 20 Jun

10%

[New] 21 to 30 Jun

Cinema
Operators



Family
Entertainment
Centres



**Supermarkets, convenience stores, and online retailers are not eligible

Duration of JSS Enhancements

- Payouts will be **enhanced for the period of Phase 2 (Heightened Alert) and Phase 3 (Heightened Alert)**, and will be disbursed in **Sep '21**.



For Workers and Businesses

Supporting workers and businesses through Phase 2 (Heightened Alert) and Phase 3 (Heightened Alert)



Additional Support for F&B, Sports, and Performing Arts

- **[New]** Jobs Support Scheme (JSS) support of **50%** extended till 20 Jun '21.
- **[New]** Support levels to continue at **10%** from 21 to 30 Jun '21.



Additional Support for Retail*, Family Attractions, and Personal Care Services

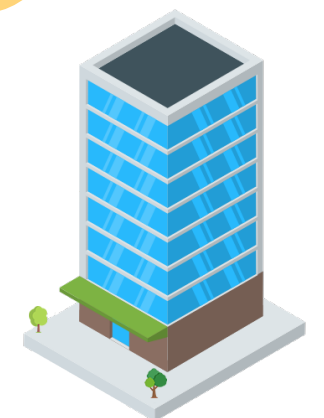
- **[New]** JSS support of **30%** extended till 20 Jun '21.
- **[New]** Support levels to continue at **10%** from 21 to 30 Jun '21.

**Supermarkets, convenience stores, and online retailers are not eligible.*



Rental Support for SME and NPO Tenant-Occupiers of Commercial Properties

- **[Ongoing]** **Half-month** rental relief cash payout disbursed by IRAS to qualifying tenants.
- **[Ongoing]** **1-month** rental relief for qualifying tenants on government-owned commercial premises.



COMMUNITY MEASURES FROM 14 JUNE 2021

	<u>Current Measures for Phase 2 (Heightened Alert)</u>	<u>Phase 3 (Heightened Alert) (14 June onwards, or as indicated)</u>
Community Measures		
Social gatherings and interactions	<ul style="list-style-type: none"> Group sizes up to <u>2 pax</u> Up to <u>2 unique household visitors</u> a day 2 social gatherings per day, whether to another household or in a public place The cap on visitors does not apply for grandchildren being cared for by grandparents 	<ul style="list-style-type: none"> Group sizes up to <u>5 pax</u> Up to <u>5 unique household visitors</u> a day 2 social gatherings per day, whether to another household or in a public place The cap on visitors does not apply for grandchildren being cared for by grandparents
Workplace	<ul style="list-style-type: none"> Work-from-home as the default No cross-deployment Social gatherings not allowed 	[No change] <ul style="list-style-type: none"> Work-from-home as the default No cross-deployment Social gatherings not allowed
Event Parameters		
Funerals	<ul style="list-style-type: none"> Up to 20 pax at any point in time on all days 	[No change] <ul style="list-style-type: none"> Up to 20 pax at any point in time on all days
Live performances MICE events	<ul style="list-style-type: none"> Up to <u>100 pax</u> with Pre-Event Testing (PET), up to 50 pax without PET No unmasking No singing/playing of instruments that require expulsion of air (e.g. wind, brass instruments) for live performances 	<ul style="list-style-type: none"> Up to <u>250 pax</u> with PET, up to 50 pax without PET From 21 June: <ul style="list-style-type: none"> May resume unmasking and singing/ playing of instruments that require expulsion of air for live performances, subject to relevant safe management measures

	<u>Current Measures for Phase 2 (Heightened Alert)</u>	<u>Phase 3 (Heightened Alert) (14 June onwards, or as indicated)</u>
Spectator and participatory sports events	<ul style="list-style-type: none"> No spectators Suspend all planned mass participation sports events 	<ul style="list-style-type: none"> Resume spectator sports with up to 250 pax with PET, up to 50 pax without PET <p>From 21 June:</p> <ul style="list-style-type: none"> Resume mass participatory sports events with up to 250 pax with PET, up to 50 pax without PET
Weddings	<ul style="list-style-type: none"> Marriage solemnisations: <ul style="list-style-type: none"> Up to <u>100 pax</u> with PET, up to 50 pax without PET Attendees are to wear face masks at all times, with the exception of the bride and groom who may wear face shields No wedding receptions 	<ul style="list-style-type: none"> Marriage solemnisations: <ul style="list-style-type: none"> Up to <u>250 pax</u> with PET, up to 50 pax without PET Couple allowed to unmask for key wedding moments; and attendees allowed to unmask momentarily for photo-taking <p>From 21 June:</p> <ul style="list-style-type: none"> Wedding receptions will be allowed with up to 100 pax with PET for all attendees, up to 50 pax with PET for wedding party of up to 20 pax
Sector Measures		
Barbeque pits and campsites (in parks, HDB estates, condominiums, and country clubs)	<ul style="list-style-type: none"> Closed to the public 	<p>[No change]</p> <ul style="list-style-type: none"> Continue to be closed to the public
Cinemas	<ul style="list-style-type: none"> Up to <u>100 pax</u> with PET, up to 50 pax without PET; with safe distancing between groups of up to 2 pax No food and beverage 	<ul style="list-style-type: none"> Up to <u>250 pax</u> with PET, up to 50 pax without PET No food and beverage <p>From 21 June:</p>

	<u>Current Measures for Phase 2 (Heightened Alert)</u>	<u>Phase 3 (Heightened Alert) (14 June onwards, or as indicated)</u>
		<ul style="list-style-type: none"> May resume serving food and beverage
Congregational and worship services	<ul style="list-style-type: none"> No unmasking/ singing / wind and brass instruments Up to <u>100 pax</u> with PET, up to 50 pax without PET 	<ul style="list-style-type: none"> Up to <u>250 pax</u> with PET, up to <u>50 pax</u> without PET <p>From 21 June:</p> <ul style="list-style-type: none"> May resume unmasking/ singing / wind and brass instruments for live performances subject to relevant safe management measures
Food & Beverage including hawker centres, food courts	<ul style="list-style-type: none"> Dining-in ceased Only takeaway and delivery allowed 	<p>From 21 June:</p> <ul style="list-style-type: none"> Dining-in allowed up to prevailing group size (5 pax)
Gyms, fitness studios, and mask-off sports activities	<p><i>For individuals aged above 18:</i></p> <ul style="list-style-type: none"> Indoor mask-off activities and classes suspended Mask-off activities only allowed outdoors, up to 2 pax Indoor/outdoor mask-on classes up to 30 persons in groups of up to 2 pax <p><i>For individuals aged 18 and below:</i></p> <ul style="list-style-type: none"> Mask-off activities only allowed outdoors, up to 2 pax 	<p>From 21 June (for all ages):</p> <ul style="list-style-type: none"> Indoor mask-off activities may resume Indoor and outdoor classes capped at 30 pax in groups of up to 5 pax Safe distancing of at least 2m between individuals and 3m between groups must be maintained
Home Based Businesses (HBBs)	<ul style="list-style-type: none"> HBBs to only operate on contactless delivery/ collection model 	<ul style="list-style-type: none"> HBBs can operate subject to prevailing safe management measures, e.g. up to 5 unique visitors a day
Hotels	<ul style="list-style-type: none"> Group of up to <u>2 pax</u> per room for staycations (except where individuals are all from the same 	<ul style="list-style-type: none"> Groups of up to <u>5 pax</u> per room for staycations (except where individuals are all from the same

	<u>Current Measures for Phase 2 (Heightened Alert)</u>	<u>Phase 3 (Heightened Alert) (14 June onwards, or as indicated)</u>
	household, subject to the room's maximum capacity)	household, subject to the room's maximum capacity)
In-person tuition and enrichment classes	<ul style="list-style-type: none"> All in-person classes suspended for those aged 18 and below 	<p>From 21 June:</p> <ul style="list-style-type: none"> Resume with enhanced safe management measures, with further details to be released by MOE. (Separate safe management measures for higher-risk arts and sports classes apply.)
Massage establishments (e.g. spas, saunas) & Hairdressers' salons	<ul style="list-style-type: none"> Services which require masks to be removed (e.g. facials, saunas) ceased 	<ul style="list-style-type: none"> Resume services which require masks to be removed (e.g. facials, saunas) Prevailing safe management measures should still be observed
Museums and Public libraries	<ul style="list-style-type: none"> Operating capacity of <u>25%</u> 	<ul style="list-style-type: none"> Operating capacity of <u>50%</u>
Shopping malls and showrooms	<ul style="list-style-type: none"> Occupancy limit of one person per <u>16 sqm</u> of Gross Floor Area (GFA) 	<ul style="list-style-type: none"> Occupancy limit of one person per <u>10 sqm</u> of GFA
Tour groups	<ul style="list-style-type: none"> Up to <u>20 pax</u> per tour 	<ul style="list-style-type: none"> Up to 50 pax for conveyance tours (Duck Tours etc.) Remain at <u>20 pax</u> for non-conveyance tours